



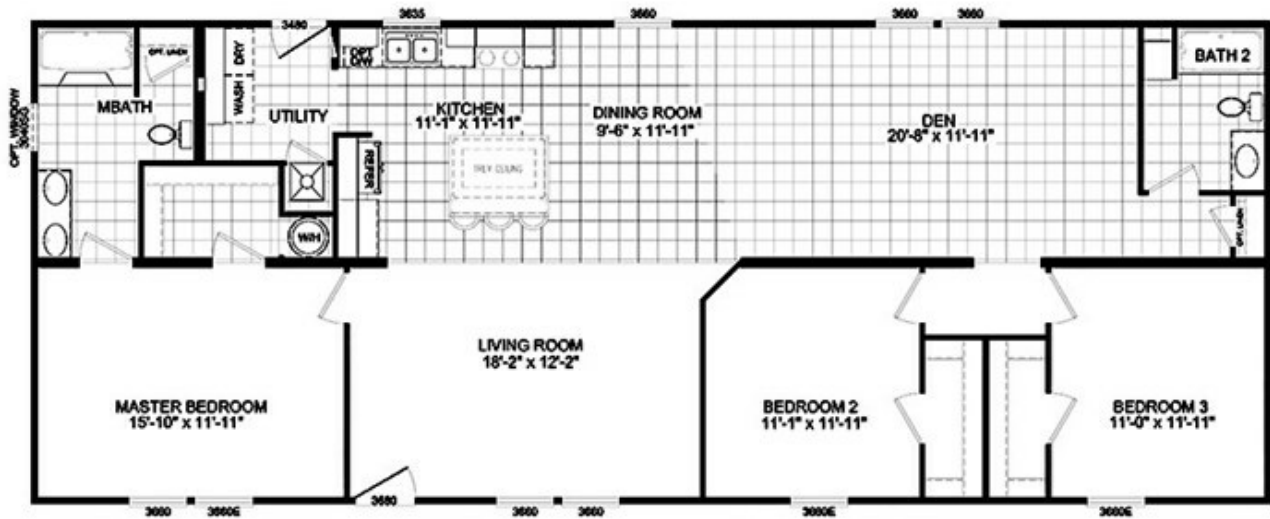
## TRUE PERF GOURMET M404-8 25X64



## TRUE PERF GOURMET M404-8 25X64

Floor plan number: CBG050759NCABM

**3 beds • 2 baths • 1600 sq.ft. • 25' width • 64' depth**



Our home building facilities invest in continuous product and process improvements. Plans, dimensions, features, materials, specifications and availability are subject to change without notice or obligation. Renderings and floor plans are representative likenesses of our homes and may differ from the actual homes. We invite you to tour a Home Center near you and inspect the highest value in quality housing available or call (336) 597-5538 to speak with a Home Consultant. Copyright 2017, CMH. All rights reserved.

## CLAYTON HOMES-ROXBORO

3970 DURHAM RD  
ROXBORO, NC 27574

Monday - Thursday: 9am - 7pm

Friday: 9am - 6pm

Saturday: 9am - 5pm

Sunday: Closed

(336) 597-5538